

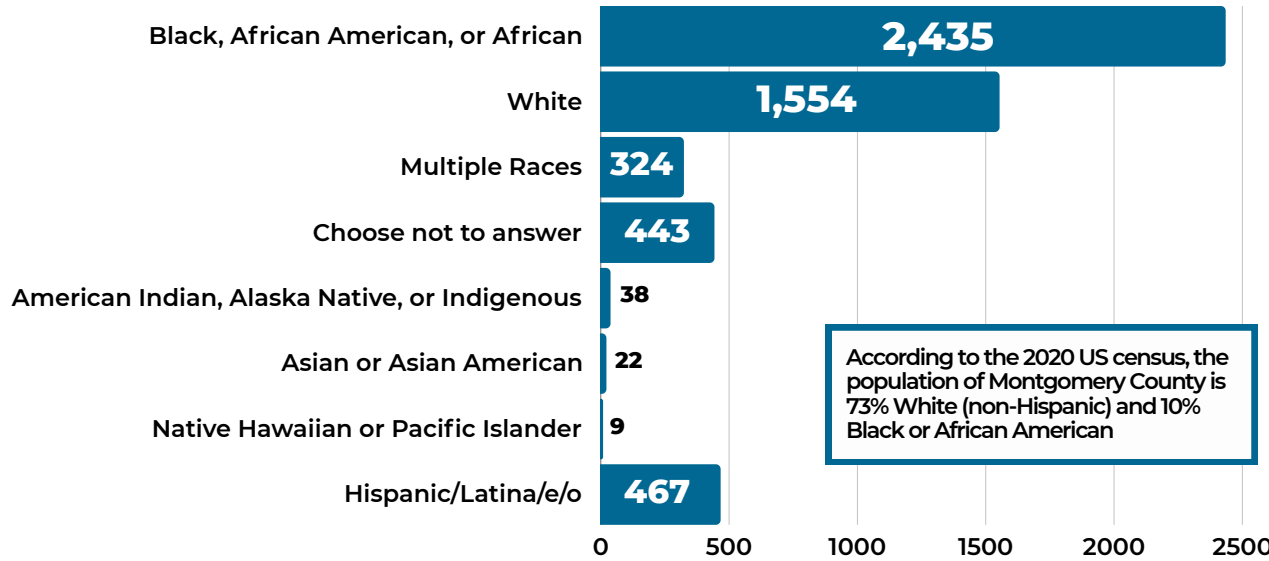


MONTGOMERY COUNTY DEPARTMENT OF HEALTH AND HUMAN SERVICES OFFICE OF HOUSING AND COMMUNITY DEVELOPMENT

2023 DATA SNAPSHOT Your Way Home Montgomery County, PA

Established in 2014, Your Way Home Montgomery County is a Public-Private partnership with cross-sector collaborations between county agencies, nonprofit service providers, philanthropic foundations, property owners, faith organizations, homeless advocates, people with lived expertise, and other community partners committed to ending and preventing homelessness.

RACIAL/ETHNICITY DEMOGRAPHICS, PERSONS SERVED



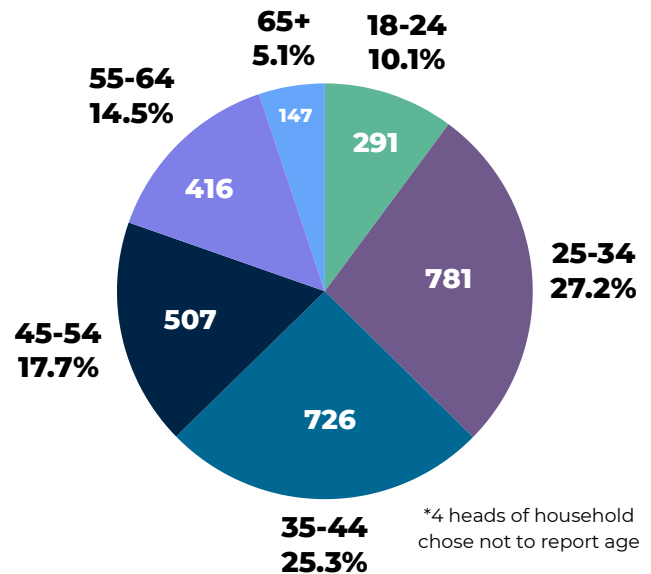
Total Served:

- 4,888 individuals in 2,880 households
- 718 households with children

GENDER DEMOGRAPHICS, PERSONS SERVED



AGE DEMOGRAPHICS, HEADS OF HOUSEHOLD



Disclaimer: Totals in demographic categories may exceed the total individuals served due to federal Housing and Urban Development data standards allowing for the selection of more than one category

FOUNDATION FUNDING



The Your Way Home Initiative Fund is held by the Montgomery County Foundation Inc., which aligns private support for the program. The private sector grants and donations that make up the Your Way Home Fund pay for housing costs that are not supported by public funding as well as capacity building initiatives that strengthen system performance.

In 2023 the Fund distributed **\$81,512** and served **2,974 persons in 1,825 households.**

2023 DATA SNAPSHOT

How the Your Way Home Partnership and Crisis Response System are Working to Make Homelessness Rare, Brief and Non-Recurring

YOUR WAY HOME CALL CENTER



Supported 8,993 calls



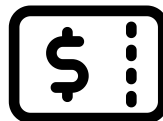
Street Outreach served **2,551** individuals and a total of **1,512** households

Emergency shelters served **1,046** individuals and a total of **737** households



Housing Resource Centers conducted **140** successful move-ins through Rapid Rehousing

Housing Vouchers provided by the Montgomery County Housing Authority continued to be successfully leased by **302** Your Way Home households.



SSI/SSDI Outreach, Access, and Recovery (SOAR) benefits through the VNA were successfully obtained by **37** households.

Between 2021-2023, 79% of clients have retained permanent housing after exiting and have not returned to homelessness.

Clients served by emergency shelter spent an average of **54 days in shelter** before exiting to permanent housing.

Chronic Homelessness:

- **324** chronically homeless individuals served in 2022
- **362** chronically homeless individuals served in 2023

PREVENTING HOMELESSNESS

EMERGENCY RENT AND UTILITIES COALITION

The Emergency Rent and Utilities (ERUC) Program was designed to provide housing stability to low- and moderate-income Montgomery County, Pennsylvania, residents at risk of eviction and/or homelessness as a result of COVID-19.

Since its launch in 2021, ERUC has distributed over **\$120M** to over **9,600** households

\$30,591,820
in rent and utility assistance distributed in 2023



3,914
households served in 2023

Equitable Access:
56% of heads of household served by ERUC in 2023 were Black or African American, while 27% identified as White. 72% identified as women.



EVICTON PREVENTION AND INTERVENTION COALITION

The Eviction Prevention and Intervention Coalition (EPIC) is a project designed to stabilize vulnerable families and individuals in Montgomery County who are facing eviction by providing them with free legal and social services support on the day of their eviction hearing.

419
households served in 2023

In 2023, there were **8,879** eviction filings in Montgomery County.*

\$3,508,382
in rental assistance distributed in 2023

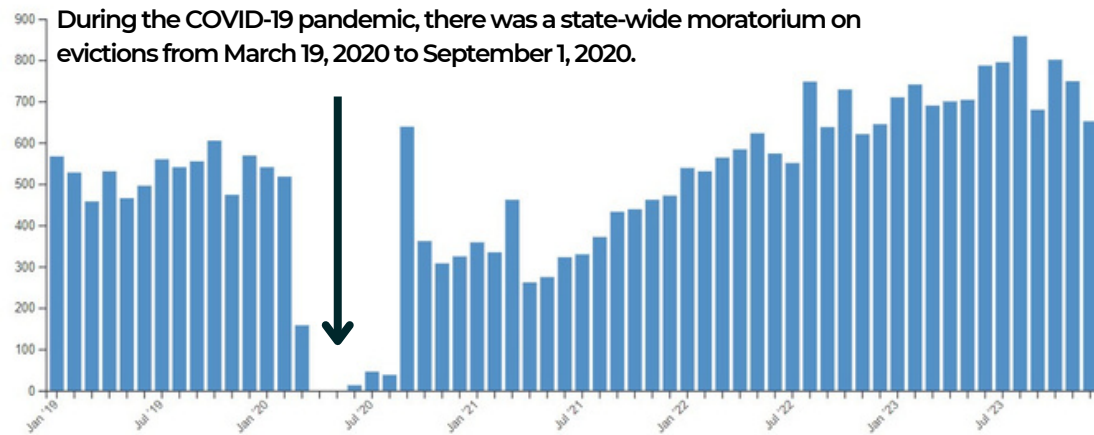
* Civil Court Data Initiative. Legal Services Corporation (accessed 2/16/24). EPIC data provided by Pottstown Cluster of Religious Communities

2023 DATA SNAPSHOT

What Homelessness Looks Like in Montgomery County

EVICTION FILINGS IN MONTGOMERY COUNTY

(REF. CIVILCOURTDATA.LSC.GOV)



The Housing Alliance of PA's Statewide Eviction Report provides an analysis of eviction data and specific county-level data on eviction trends. The report shows that statewide, eviction filings have nearly reached pre-pandemic levels, and 87% of statewide filings are concentrated in 20 counties, including Montgomery County.

Montgomery County has observed the most substantial increase in eviction filing rates of any county in Pennsylvania, from 6.9% in 2018 to 8.8% in 2022.

POINT-IN-TIME COUNT AND ANNUAL SUPPORT

The 2024 PIT Count identified

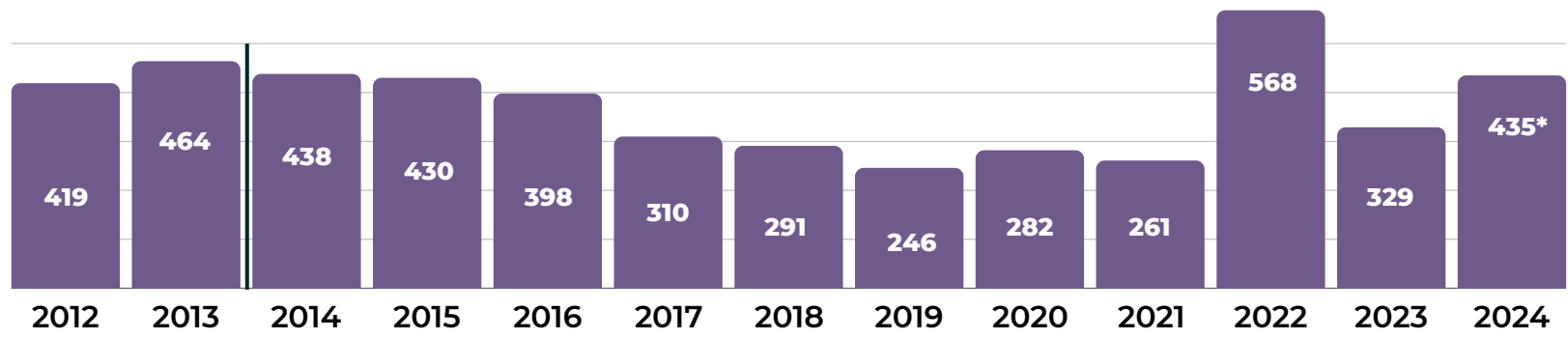
435



334 people sleeping in emergency shelter (including Code Blue shelter)

101 people found unsheltered and sleeping outside

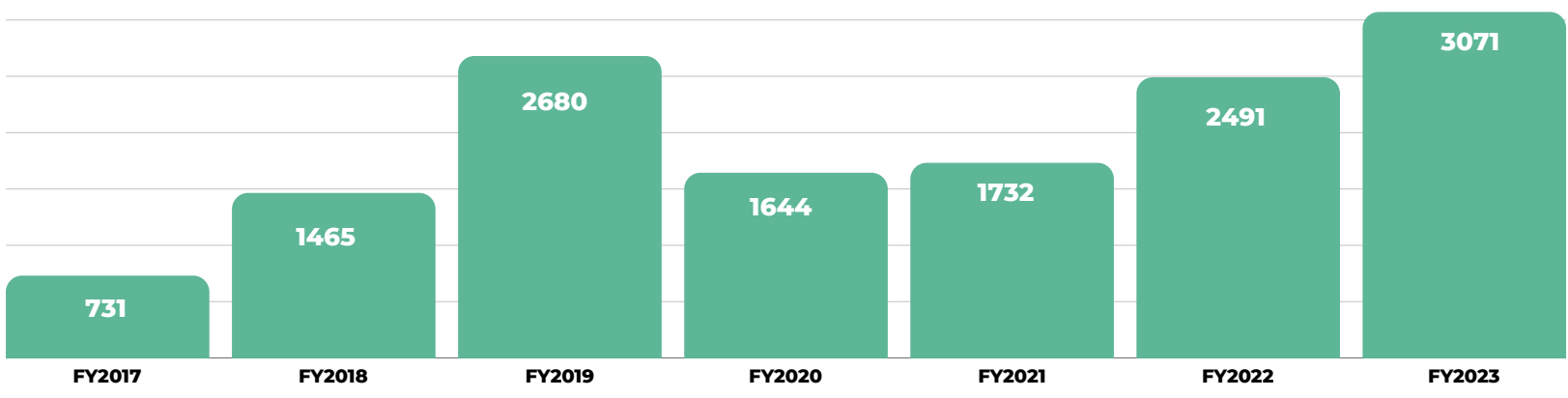
individuals experiencing homelessness



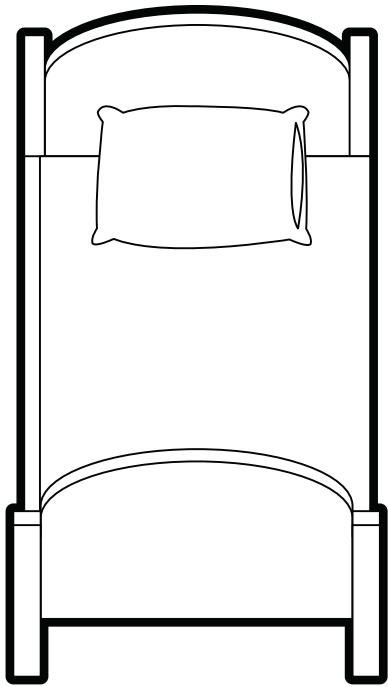
*2024 PIT Count data submitted by Montgomery County remains unofficial until confirmed by HUD.

Annual Performance Report data related to individuals receiving support through Street Outreach (SO), Emergency Shelter (ES), and Transitional Housing (TH) services indicates an increase in people experiencing homelessness in Montgomery County. National studies indicate more people are facing systemic homelessness due to rising housing expenses, the enduring economic effects of COVID-19, and the spike in eviction rates.

■ Individuals Served Annually in SO, ES or TH



EMERGENCY SHELTER: AVAILABLE BEDS



Year Round Shelter Beds



Single Adult

51



Family

82

Seasonal Overflow Beds



Code Blue

80

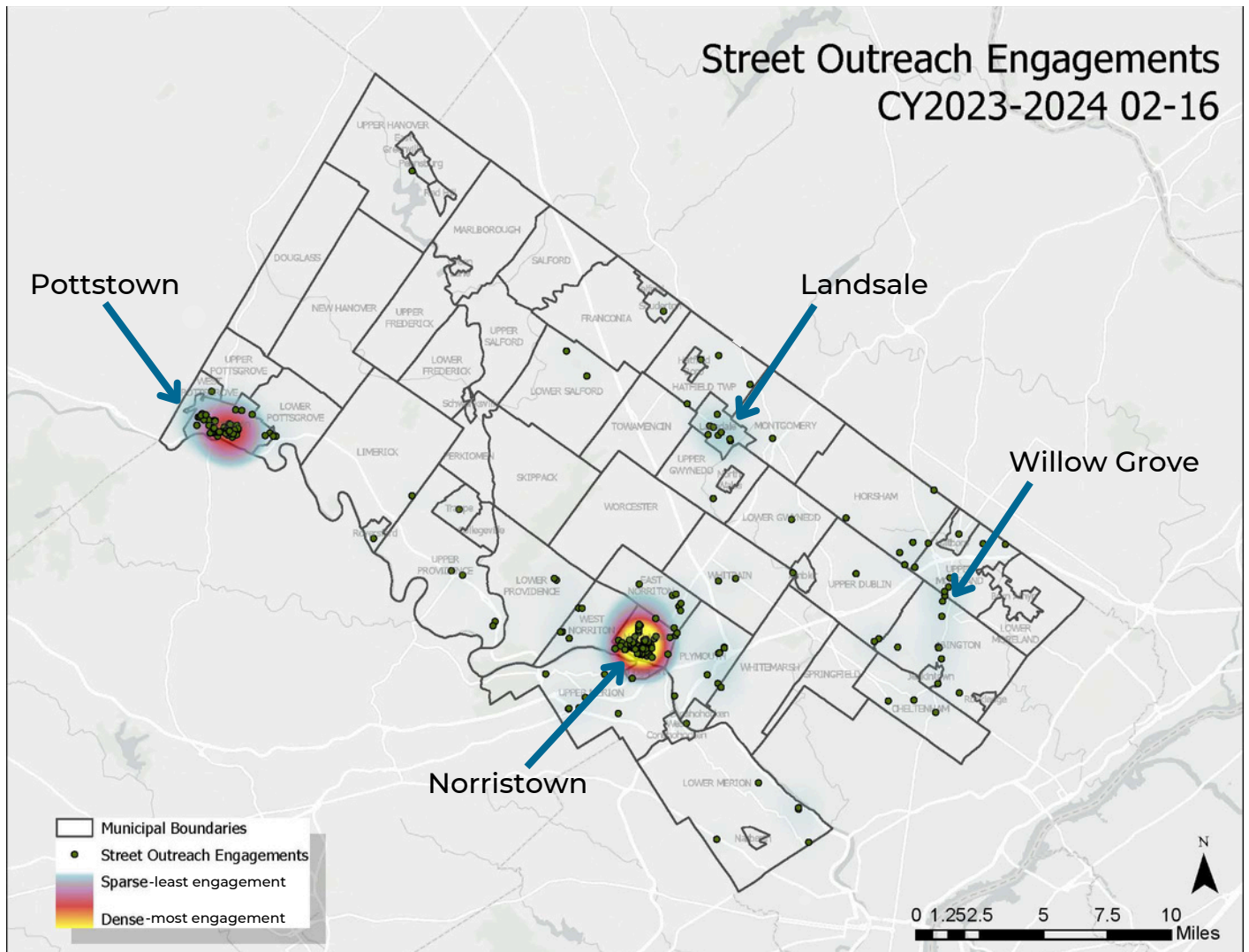


Seasonal

45

These beds represent room for 24 households in Family Shelter and 9 households in Domestic Violence Shelter

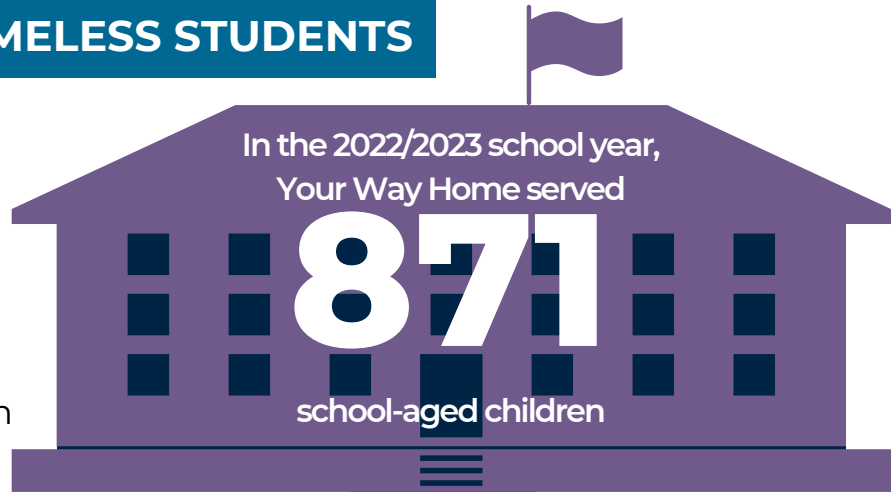
STREET OUTREACH ENCOUNTER LOCATIONS



2023 DATA SNAPSHOT

MCKINNEY VENTO DATA ON HOMELESS STUDENTS

The McKinney Vento act defines homeless children as “individuals who lack a fixed, regular, and adequate nighttime residence.” This definition includes more situations than homelessness for adults, and can include children who are doubled-up (e.g., living with another family), living in a hotel or motel, living in emergency shelter or transitional housing, or living unsheltered.



2023 FUNDING TO ADDRESS HOMELESSNESS

<p>Permanent Supportive Housing & Rapid Re-Housing</p> <ul style="list-style-type: none"> Affordable Housing Trust Fund PHARE DCED ESG Home4Good ESG CDBG-CV Continuum of Care Homeless Assistance Program (HAP) & Human Services Block Grant (HSBG) HealthChoices <p>\$7,351,676</p>	<p>Emergency Shelter Operations</p> <ul style="list-style-type: none"> ESG CDBG Homeless Assistance Program (HAP) & Human Services Block Grant (HSBG) HealthChoices FEMA Emergency Food & Shelter Program (EFSP) <p>\$2,713,646</p>	<p>Coordinated Entry/Call Center</p> <ul style="list-style-type: none"> Affordable Housing Trust Fund PHARE DCED ESG Home4Good ESG CDBG-CV Continuum of Care Homeless Assistance Program (HAP) & Human Services Block Grant (HSBG) HealthChoices <p>\$315,000</p>
<p>New Emergency Shelter Construction</p> <ul style="list-style-type: none"> HOME-ARPA <p>\$1,000,000</p>	<p>Street Outreach, Street Medicine, & Emergency Hotels</p> <ul style="list-style-type: none"> FEMA EFSP <p>\$15,313</p>	<p>Case Management</p> <ul style="list-style-type: none"> SAMHSA PATH HealthChoices Homeless Assistance Program (HAP) & Human Services Block Grant (HSBG) <p>\$484,826</p>
<p>Affordable Housing Development</p> <ul style="list-style-type: none"> Affordable Housing Trust Fund HealthChoices HOME HOME-ARPA <p>\$5,892,428</p>	<p>Homeless Prevention & Emergency Rent</p> <ul style="list-style-type: none"> CWSGI – ARHI ERAP (Treasury & State) HOME HealthChoices Homeless Assistance Program (HAP) & Human Services Block Grant (HSBG) Affordable Housing Trust Fund <p>\$15,226,101</p>	<p>Psychiatry</p> <ul style="list-style-type: none"> Human Services Block Grant (HSBG) <p>\$40,000</p>

Total: \$33,038,990

2023 DATA SNAPSHOT

Providing a Path to Housing Stability and Affordability

AFFORDABLE HOUSING DEVELOPMENT

In 2023 HOME Affordable Housing Development held ribbon cuttings for three projects:

- Federation Housing's Davisville Senior Apartments: **54** one-bedroom units for low-income seniors, with 1 unit dedicated to a Your Way Home client
- **4** new Habitat for Humanity units in Hatfield, intended for households at 60% or below AMI
- **14** apartment units in Norristown purchased by the Ann Francis Outreach Foundation for the purpose of renting as affordable housing, with 1 unit dedicated to a Your Way Home client

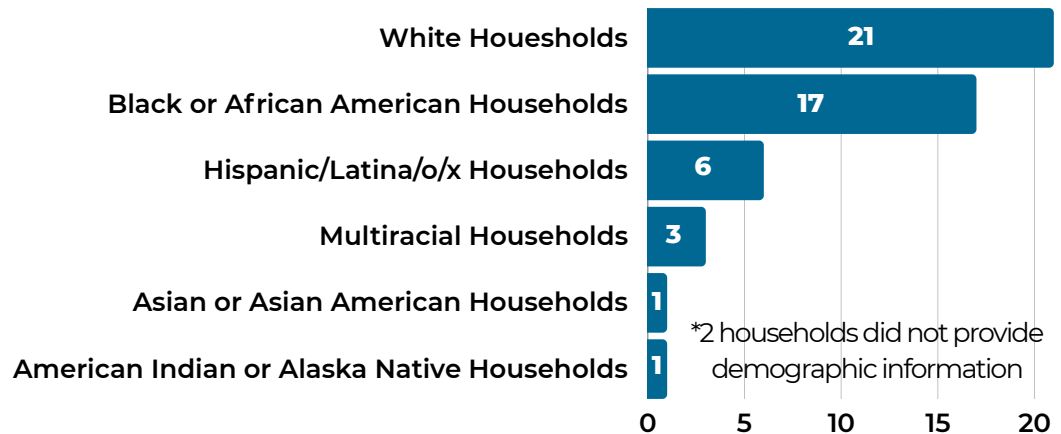


FIRST-TIME HOMEBUYERS PROGRAM

The Homebuyers Program, established and administered by the Commissioners and the Office of Housing & Community Development, is directed to assist low, moderate, and median income households interested in purchasing a home in Montgomery County. Eligible participants received between assistance from the Affordable Housing Trust Fund and the American Rescue Plan Act funds.

2023 FTHB APPLICANT DEMOGRAPHICS

51 TOTAL APPLICATIONS APPROVED*



\$60,774 distributed from the Affordable Housing Trust Fund and \$120,000 from the American Rescue Plan Total = \$180,774



- 40 of the approved households completed Housing and Financial Counseling through Genesis Housing Corporation
- 7 Approved Households from the 2023 application cycle closed on new homes
- Demographics for buyers included 1 Black or African American household, 5 White households, and 1 Hispanic household
- Homes were purchased in the municipalities of Horsham, Lansdale, Pottstown, Plymouth Meeting, Upper Merion, and Norristown

The National Low Income Housing Association's 2023 Out of Reach Report for Montgomery County, PA

- The hourly wage necessary to afford a 2 bedroom apartment at Fair Market Rent (\$1,470) in Montgomery County is \$28.27 per hour
- The estimated hourly mean renter wage in Montgomery County is \$26.34 per hour
- The monthly rent affordable for residents making 30% of the Area Median Income in Montgomery County is \$858
- Montgomery County had 91,673 renter households, which is 28% of all households