

# Community Support Journal

## Montgomery County Community Support Program Committee *Newsletter*

June 2025

Volume 6



CSP Logo designed by  
Chris Ford

## Over 300 attend 2025 CSP Conference And Mental Health Awards Ceremony

**By Kathie Mitchell, CSJ Editor**



Over 300 people celebrated Mental Health Awareness Month on May 20th at the 12th Annual Montgomery County CSP Conference & 47th Montgomery County Mental Health Awards Reception with the theme "Self-care and Wellness."

It was a beautiful spring day filled with calming Tai Chi led by Mitch Goldfarb and group drumming led by Tony Mascara of Audio Lab.

People mingled throughout the beautiful gardens at Martha's Community Farm in

Audubon, stopping at the numerous tables where providers displayed resource information and held craft activities. The Family Satisfaction and Community Satisfaction Teams from HopeWorx assisted people in making Kindness Cards, Access Services showed their hand in making Friendship Bracelets and Central Behavior Health provided reusable totes to make Tie-Dye Totes. Peyton Hearts engaged participants in a sewing heart project while the Forteniters Club created Sun Catchers.

Walking a little farther around the grounds and one might grab a therapeutic hand massage from an advocate from AdvocacyWorx or play Corn Hole or Jenga with a friend. Games were provided by

### INSIDE this issue:

- Conference photos... 3
- Award winners ..... 4
- NAMIWalks ..... 5
- Pride Month..... 6
- Montco CSP mtgs.... 7
- Free family cookout..8
- Conference sponsors 9
- CIC groups ..... 11
- CIC game day ..... 12
- QPR training ..... 13
- Pathway to pardons.14

## Juneteenth Holiday is June 19th

Montgomery County celebrated Juneteenth this year at its annual



flag-raising on June 16th. For more information, click [here](#):

Continued on page 2

Creating Increased Connections (CIC). Another highlight that added to the festivities was music provided by the CSP Talent Group of the Community Support Program of the Lehigh Valley. Judy Kichline can be contacted at: 610-867-0688 x234.



Other sponsors included PA Link—a top sponsor of the conference every year. The PA Link helps people with disabilities and older adults find information and connect to support and services in their community. Magellan Healthcare, Access Services, RHA Health Services, Goodwill Keystone and The Ferns Peer Run Respite also sponsored the conference and/or had resource tables at the event. HopeWorx and the county Office of Mental Health also sponsored the event.

A delicious buffet style lunch was provided by AAA Catering.

Following lunch, the 47th Annual Montgomery County Mental Health Awards Reception drew a packed crowd under the tent that spilled onto the lawn. Emcees Lindsay Meehan Mayo and Morgan Killian-Moseley gave dynamic introductions for the Recovery & Resiliency Award Winners. Commissioners Vice-Chair Jamila H. Winder gave a poignant, personal speech about a family member's recovery and emphasized the importance of the recovery and support services that were available in Montgomery County.

The recipients of the 2025 Mental Health Awards are: Julie Whitmore, Katie Clowney, Sgt. Matthew Stadulis, Rachel Previte, Sharda Wescott and Tyshon Bullock. Also, Merakey's Children's Blended Case Management Team: Anise Hemond, Ann Connaghan, Jon Robins, and Stephanie Brown.

And the Justice Related Services Team: Cristina Mejia, Madeleine Pritchard, Lexi Albuck, Abigail Gilson, Alyssa Selin, Eliot Rusk, Emily Darrah, Fotini Gouliaberis, Jacquelyn Edwards, Madison Crawford, Ruth Liebendorfer, and Selena Morales.

The Ferns Peer-Run Respite: Olivia Kripak, Nick Sterling, Jim Markey, Irene Pusey, Andrew Rinker, Anna Bruecks, Sarah Moyer, Amy Seiwert, and Chanel Hall-Pringleau.

And, the Montgomery County Department of Public Safety's Emergency Communications Leadership Team: Jennifer Cass, Kevin Rairdon and Tori Rosa.

For more information about the individuals and teams and the excellent work they do, please go to the Montgomery County CSP website by clicking [here](#).

This year's CSP Ambassador Award was presented to Raven G. Waters. To read the description of the award, please click [here](#).

The 2025 CSP Art Poster Contest winner was Love YOURself by Keyton W. The award included \$100 and magnets created of the art work and distributed at the conference.

Conference feedback can be sent to Harry Bowles at [hbowles@hopeworxinc.org](mailto:hbowles@hopeworxinc.org).



# 2025 Conference Photos



See more photos at:  
[montcopacsp.org](http://montcopacsp.org)





## Mental Health Award Winners:



## Recovery & Resiliency Award Winners: (Top L to R clockwise)

Julie Whitmore, Katie Clowney, Sgt. Matthew Stadulis, Rachel Previte, Shardae Wescott, Tyshon Bullock, Merakey's Children's BCM: Anise Hemond, Ann Connaghan, Jon Robins, and Stephanie Brown. Justice Related Services: Cristina Mejia, Madeleine Pritchard, Lexi Albuck, Abigail Gilson, Alyssa Selin, Eliot Rusk, Emily Darrah, Fotini Gouliaberis, Jacquelyn Edwards, Madison Crawford, Ruth Liebendorfer, Selena Morales. The Ferns Peer-Run Respite: Jim Markey. Montco Dept. of Public Safety's Emergency Communications Leadership: Jennifer Cass, Kevin Rairdon, Tori Rosa.

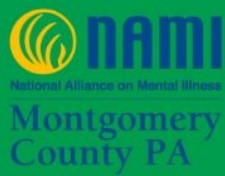
**Congratulations to all of the winners!**



**Congratulations NAMI Montgomery County!**  
**2025 NAMIWalks raised \$115,680 exceeding its goal!**







**Celebrate your identity,  
embrace love, and  
support mental wellness  
this Pride Month.**

**Happy Pride Month from NAMI Montco PA.** 🌈 🇺🇸 🇩🇪

We are also still running our free LGBTQ+ Support Group on the first and third Thursdays of the month at 6 pm. Register once here: <https://namimontcopa.org/support-group-registration/>



## MONTGOMERY COUNTY COMMUNITY SUPPORT PROGRAMS



**THIRD THURSDAY  
MONTHLY**



**SUBCOMMITTEES  
12-1 PM  
FULL MEETING  
1-2:30 PM**

**HYBRID MEETINGS OFFERED!**

**LOCATED IN PERSON AT ADVANCED TECHNOLOGY CENTER  
(ATC) 212 AT MONTGOMERY COUNTY COMMUNITY COLLEGE  
340 DEKALB PIKE, BLUE BELL, PA 19422**

**OR ONLINE VIA ZOOM**



**Please email [pjohnson@hopeworxinc.org](mailto:pjohnson@hopeworxinc.org) for Zoom link, more information, and to be added to the mailing list.**

***Montgomery County Community College is not affiliated with the event and the College should not be contacted regarding the program.***





# **FREE** *Community* **FAMILY** **COOKOUT**

**SUNDAY, JUNE 29, 2025**

**12:30p to 5:30p (Food served 1p -5p)**

Free Community Family Cookout - Everything is Free - Free Food, Free Games, Free Amusements. Grandpop Bubbles will be here with his giant bubbles, trackless train, and inflatable horse derby races. School Supplies and Book Bags will also be given out (while supplies last). BINGO, Line Dancing and a chance to win a great family prize when you bring any can good or non-perishable food item (Please no expired items) to get a raffle ticket.

**MACEDONIA MINISTRIES (PARKING LOT)**  
**2633 HILLCREST AVENUE, NORRISTOWN, PA 19401**

**REVEREND SCOTT DORSEY, SENIOR PASTOR**



Thank you to this year's CSP Conference Sponsors!

Need help finding resources?



**Call: 1-(800)-753-8827**



Thank you to this year's CSP Conference Sponsors!

# Magellan HEALTHCARE®

MARTHA'S  
CHOICE MARKETPLACE  
& COMMUNITY FARM  
CATHOLIC SOCIAL SERVICES







**Creating Increased Connections**  
A program of Resources for Human Development

# CREATING INCREASED CONNECTIONS (CIC) GROUPS



## TAKING BACK OUR POWER

Taking Back Our Power is a peer support group for individuals with lived experience of sensory phenomena (like hearing things others don't hear) and unusual beliefs



### MONDAYS

**2:00PM-3:00PM**  
Hopeworx

1210 Stanbridge St #600,  
Norristown, PA 19401



**TUESDAYS**  
**2:30PM-4:00PM**

Bryn Mawr Presbyterian Church

625 Montgomery Ave  
Bryn Mawr, PA 19010

**THURSDAYS**  
**1:00PM-2:00PM**

Trinity Reformed Church

60 N. Hanover St  
Pottstown, PA 19464



## CIRCLE OF HOPE

Circle of Hope is peer-to-peer led discussion group. Join us for lively conversation about how we are feeling, our successes and challenges, our recovery, and how we maintain our wellness. Everyone is welcome.



**WEDNESDAYS**  
**12:30PM-1:30PM**

Hopeworx

1210 Stanbridge St #600,  
Norristown, PA 19401

**THURSDAYS**  
**10:30AM-12:00PM**

Hopeworx

1210 Stanbridge St #600,  
Norristown, PA 19401



## LIVE ANOTHER DAY

**TUESDAYS**  
**12:30PM-1:45PM**

Lansdale Library

301 Vine St  
Lansdale, PA 19446

Alternatives to Suicide groups are intended as non-judgmental spaces where people can share some of their darkest thoughts without being assumed to have an illness or being assessed for involuntary interventions. Openly exploring these thoughts - and the feelings and experiences underneath them - is often the key to moving toward something different.

## WALK AND TALK

**Every 1st and 3rd Friday**  
**11:00AM-12:30PM**

**King of Prussia Mall**

**Meet at Food Court on 1st Floor**

Join us for a time to work on our wellness, and enjoy each other's company as we exercise together.

Enter between KPOT and Bonefish Grill

160 N Gulph Rd

King of Prussia, PA 19406



## WOMENS IDENTITY AND EXPERIENCES GROUP

This group was created for women as a safe environment to voice & openly share our life stories as women & to empower ourselves to find greater meaning & purpose in life.

**WEDNESDAYS**  
**3:00PM-4:30PM**

Teams Link

<https://teams.microsoft.com/Womensgroup>



For More Information Contact [Sheila.HallPrioleau@RHD.org](mailto:Sheila.HallPrioleau@RHD.org) 215-906-0453  
[www.ciconnections.org](http://www.ciconnections.org)



# cic GAME DAY

**FRIDAY, JUNE 27 2025**  
**12:00PM-3:00PM**

COME JOIN US FOR A FUN-FILLED DAY OF GAMES, FOOD,,  
COMMUNITY, AND EXCITEMENT WHETHER YOU'RE A  
BOARD GAME ENTHUSIAST, CORNHOLE CHAMPION, OR  
JUST LOOKING TO HAVE A GOOD TIME, THIS EVENT IS  
PERFECT FOR YOU.

**MOST REGISTER**  
**CICGAMEDAY.EVENTBRITE.COM**

**CREATING INCREASED CONNECTIONS**  
**18 E. 4<sup>TH</sup> ST**  
**BRIDGEPORT, PA 19405**

QUESTIONS CONTACT  
KARLEEN CAPARRO  
484-751-7264

  
Creating Increased Connections  
A program of Resources for Human Development





PROUDLY IN  
PARTNERSHIP:



# QPR GATEKEEPER TRAINING

**ASK A QUESTION, SAVE A LIFE**

**QUESTION. PERSUADE. REFER.**

**3 SIMPLE STEPS.**

**A TRAINING AROUND SUICIDE WARNING  
SIGNS AND PREVENTION.**

**WITHIN 2 HOURS, BECOME EQUIPPED TO  
PREVENT BY WAY OF A PRODUCTIVE,  
NON-JUDGMENTAL CONVERSATION.**

## **TRAININGS AVAILABLE!**

**FOR MORE INFORMATION OR TO SCHEDULE A TRAINING:**

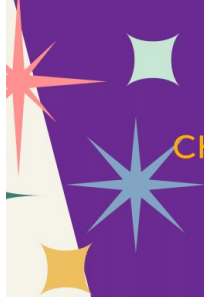
**CHEVAUGHN SATCHELL:**

**(610) 278 - 5117 EXT 1288**

**CHEVAUGHN.SATCHELL@MONTGOMERYCOUNTYPA.GOV**

**LINDSAY MEEHAN MAYO**

**LMEEHANMAYO@ACCESSSERVICES.ORG**



# PATHWAYS *to* PARDONS *Expungement Clinic*

EMPOWERING PEOPLE WITH KNOWLEDGE TO HELP IMPROVE THEIR LIVES!

**JUNE 21 • 12 PM – 1:45 PM**

CONGRESSWOMAN MADELEINE DEAN'S DISTRICT OFFICE  
115 E. GLENSIDE AVENUE, SUITE 1 • GLENSIDE, PA 19038

Legal experts will be on hand to provide FREE information about the criminal justice system, explain eligibility requirements, and offer limited on-site application assistance. My staff and I will be on hand to provide information on state services.



STATE REPRESENTATIVE  
**NAPOLEON NELSON**  
154th Legislative District



CONGRESSWOMAN  
**MADELEINE DEAN**  
4th Congressional District



## Subcommittee Reports from May 2025

**Advocacy Subcommittee:** Christine Stutman, Executive Director of NAMI Montgomery County, said the committee discussed Medicaid cuts and how to get involve discussions with legislators and others. Suggested bringing in PHAN to talk with larger CSP and how to be most effective in advocating to legislators. She's on BuckMonts Collaborative and they are going up to Harrisburg on June 4th to discuss housing and mental health. She'll share info. Buses are scheduled and it's organized for meetings with legislators. Will send info to Penny. NAMI Smarts is a longer-term project. PHAN is more about being most effective. We don't want to flood legislators with calls at the same time. Morgan said she talked at Regional CSP in March. How to strategize. Sue said some of the things they advocated for in the past. For example, getting clubhouses on the county radar. Years ago, we advocated for crisis services. Every 2 or 3 years we do a needs assessment in collaboration with the county. We did discuss transitional housing and the unhoused community. The naval base might be used for housing.

**Community Outreach Subcommittee** – Erin said Art Contest winners were announced. Getting magnets printed and distributed at conference. CSP Discord is set up and ready. Look out for that link. Contact Erin if you have questions. [evillarose@hopeworxinc.org](mailto:evillarose@hopeworxinc.org). We're looking for another co-chair. Also discussed different events to attend. June 6<sup>th</sup> – we will attend the Lansdale First Friday. Garden Party theme. To be in community and see what's going locally. Might apply for Lansdale Farmers Market. 9 a.m. to 12:30 a.m. Lansdale is centrally located in the county. Penny suggested attending church events.

**Conference Subcommittee** – Harry said our event is next Tuesday. Finetuning last minute details. We're sold out now but still getting requests for tickets. We're expecting about 150 more people than last year. Looking for volunteers to help clean up when the conference is over. Lindsay – what time should we set up tables? 8-8:30 a.m.

### CSP MEETING CALENDER 2025

*Meetings are held every third  
Thursday, monthly from  
12: 00-2:30pm*

*The next meetings will be:*

July	17
August	21
September	18
October	16

*Meetings are held in person  
and via Zoom.*

### Montgomery County CSP Executive Committee

#### 2024/2025 Tri-Chairs

Provider Member: Jim Markey

Person in Recovery: Morgan Killian-Mosley

Family Member: Vacant

County Liaison -  
Tracey Ripper-Thomas



#### 2024/2025 Sub-Committee Chairs

Community Outreach: Julie Whitmore, Erin Villarose

Advocacy: Anise Robinson

Conference: Harry Bowles

*Fiduciary - HopeWorx, Inc.*

1210 Stanbridge Street,  
Suite 600  
Norristown, PA 19401  
610-270-3685

#### 2024/2025 Treasurer

Justin Chamrin



## CSP Principles

- \* Person Centered/  
Person Empowered
- \* Culturally competent
- \* Designed to Meet  
Special Needs
- \* Community Based  
with Natural Supports
- \* Flexible
- \* Coordinated
- \* Accountable
- \* Strengths-Based

## **CSP Mission Statement:**

Montgomery County's Community Support Program (CSP) brings together individuals that receive mental health services, their family members, providers and the Department of Behavioral Health in an equal partnership to promote recovery and excellence in the delivery of community-based mental health services.

The committee strives to include a balance of people who use services, people who provide services, family members, and interested members of the community at large. The CSP initiatives continue to grow state, regionally and county wide. As the involvement increases CSP has become a place that feedback can truly be given to the county from individuals that receive services and information can be given that suits the needs and requests of those that attend.

## **Organizations who regularly send representatives to CSP:**

Central Behavioral Health,  
AdvocacyWorx, Community  
Satisfaction Team of Montgomery  
County, Magellan Health Services,  
Montgomery Co. Department of  
Behavioral Health, Montgomery  
County Emergency Services (MCES),  
NAMI Montgomery County,  
Norristown Vet Center, Resources for  
Human Development, Salisbury  
Behavioral Health

## CSP Subcommittees:

- \* **Advocacy Subcommittee**—Works on legislative, policy, communication, budget, voter education and other issues related to mental health services in the county, statewide and at the federal level when relevant. At the direction of the CSP Committee, the Advocacy Subcommittee gathers information on issues, plans advocacy events and creates a monthly newsletter to provide information to the stakeholder network as well as the community at large about the work of CSP. The newsletter also provides updates on new and changing mental health services provided in Montgomery County. The newsletter editor can be contacted at: [kathiemitchell8221@gmail.com](mailto:kathiemitchell8221@gmail.com).
- \* **Community Outreach Subcommittee**—Works on facilitating opportunities for people in the CSP community to be more involved in the Montgomery County community. This includes implementing the Community Connections grants, which provide funding for people to participate in a variety of activities. The committee also implements transportation grants that provide gas cards and SEPTA day passes to CSP community members. The annual CSP Poster Art contest is also organized by this committee.
- \* **Conference Subcommittee** – The conference subcommittee will plan and fundraise for the annual Montgomery County CSP Conference.

## **Meetings:**

12:00 p.m. to 2:30 p.m.

3rd Thursday of each  
month

Montgomery County  
Community College  
Blue Bell, PA

In person & Zoom

**Kathie Mitchell, Newsletter Editor**

## **Join our Mailing list!**

We have an email list as  
well as a regular mailing,  
to join:

Send an e-mail to:

[pjohnson@hopeworxinc.org](mailto:pjohnson@hopeworxinc.org)

Or send your contact info  
to this mailing address:

**We invite all peers, family members and  
providers/professionals to attend.**

**Website:** [www.montcopacsp.org](http://www.montcopacsp.org)

[https://www.facebook.com/  
montcopacsp/](https://www.facebook.com/montcopacsp/)